



Official 2024 Player Program Caddy Book

Call or Text Questions:
(414) 484-5803 – General Info
(920) 629-9997 – Officials/TD

More Info:

www.silvercupdiscgolf.com

Spectator Info: www.discgolfmanitowoc.com

Email: discgolf@discoverwisc.com



Sponsor List (call to thank them...)

Bank 1st National	920-652-3274	bankfirstnational.com
Beerntsen's Confectionary	920-684-9616	Beerntsens.com
Cedar Crest Ice Cream	800-682-5577	cedarcresticecream.com
Confluence Graphics	414-962-7000	confluencegraphics.net
Cool City Spas	920-794-8321	royalkitchensandbaths.com
DEW Disc Golf	920-629-9997	discoverwisc.com
Discraft	248-624-2250	discraft.com
Evergreen Disc Sports		
EZ-GO Golf Cars	920-629-1349	
Flying Fortress	920-540-3107	
Hartman's Greenhouse	920-683-2123	hartmansgreenhouse.com
John Van Lanen		
La Carreta Mexican	920-686-0414	lacarretamanitowoc.com
Lakeshore Auto Glass	920-458-4631	lakeshoreautoglass.com
Lighthouse Inn	920-793-4524	lhinn.com
Mtwc Area Vis & Conv Bureau	920-686-6071	manitowoc.info
Manitowoc Parks & Rec	920-686-3580	manitowoc.org
Manitowoc Trophy	920-684-7318	manitowoctrophy.com
MVP Disc Sports		mvpdiscsports.com
Paige Pierce		paigepierce.com
Rollin' Ridge DGC	920-740-7308	rollinridge.com
Scott's Vending	920-451-9820	scottsvending.net
Andrew Stephan		The Musicman
The Fitness Store	920-684-8088	thefitnessstore.com
Throwing Art (John Dorn)	920-419-0582	throwingart.com
University BP	920-973-5661	poppenterprises.com
Visual Eclipse Productions	414-559-4687	visualeclipseproductions.com

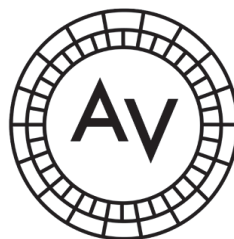
JUNGLE CHRYSLER - Registration Refund ACE RUN

Like eminem says, "You only get one shot" so Ace hole 27. 1st ace wins a refund of your registration. No aces and the Advanced winner moves up next year FREE.

TEE OFF AREAS (check-in 20 minutes prior to your tee time)

Creekside	Hole 14	Check-in at Hole 14
Lakeside	Hole 19	Check-in at Concession
Super Silver	Hole 20 (Super 1)	Check-in at Concession
Ridge	Hole 1	Check-in at Pro Shop

Silver Cup Sponsors



A Pool (MA1, FA1, MA40, MA50, MA55, MA60)																				
Rollin' Ridge, Lakeside, Super Silver																				
Divisions	Tees/Hole #	1	2	3	4	5	6	7	8	9	10	11	12	13	14	15	16	17	18	Front
Rollin' Ridge AM	PAR	3	3	4	3	3	3	4	3	4	3	3	3	3	3	4	3	3	4	59
MA1/FA1/MA40-50-55-60	Red to Red	378	401	718	380	333	291	413	340	418	273	309	415	341	320	427	231	354	506	6848
Divisions	Tees/Hole #	19	20	21	22	23	24	25	26	27	28	29	30	31	32	33	34	35	36	Front
Lakeside Silver PM	PAR	3	3	3	3	3	3	3	4	3	3	3	3	3	3	4	4	3	4	58
MA1/MA40	Long/Champ	248	250	272	335	245	213	365	450	330	260	285	330	400	306	503	550	362	495	6199
FA1/MA50-55-60	Long, No Champ	248	198	212	335	245	213	365	450	330	260	285	330	400	306	503	478	362	495	6,015
	adv	a	a	a	b	a	a	c	a	a	a	a	a	a	c	b	b	c		
Divisions	Tees/Hole #	1	2	3	4	5	6	7	8	9	10	11	12	13	14	15	16	17	18	Front
	Original Hole #	20	21	22	23-24	25	26	27	33	34	35	36	3	4	5	6	9	12	13-14	
Super Silver	PAR	3	3	4	4	3	4	3	4	4	3	4	4	3	3	4	4	3	5	65
MA1/MA40	Long/Champ	250	272	395	416	365	450	330	503	550	362	495	610	344	350	403	518	323	864	7,800
Super Silver	PAR	3	3	4	4	3	4	3	4	4	3	4	3	3	3	4	4	3	5	64
FA1/MA50-55-60	Long, No Champ	198	212	395	416	365	450	330	503	478	362	495	288	344	350	403	518	323	788	7218
		a	a	c	a	c	a	a	c	c	b	c	b	b	b	c	c	b	a	
B Pool (MA2, FA2)																				
Creekside, Rollin' Ridge, Super Silver																				
Divisions	Tees/Hole #	1	2	3	4	5	6	7	8	9	10	11	12	13	14	15	16	17	18	Front
Creekside Silver AM	PAR	3	3	3	3	3	4	3	3	3	4	3	4	3	4	3	3	3	3	58
MA2/FA2	Long, No Champ	188	205	288	244	308	318	275	240	398	525	324	426	310	478	160	225	170	330	5,412
	int creekside	a	a	b	a	a	a	a	a	b	b	a	b	a	a	a	a	a	a	
Divisions	Tees/Hole #	1	2	3	4	5	6	7	8	9	10	11	12	13	14	15	16	17	18	Front
Rollin' Ridge PM	PAR	3	3	4	3	3	3	3	3	3	3	3	3	3	3	3	3	3	3	55
MA2/FA2	Orange to Red	326	338	619	273	258	236	353	214	371	249	265	341	263	255	282	169	334	414	5560
Divisions	Tees/Hole #	1	2	3	4	5	6	7	8	9	10	11	12	13	14	15	16	17	18	Front
	Original Hole #	20	21	22	23-24	25	26	27	33	34	35	36	3	4	5	6	9	12	13-14	
Super Silver	PAR	3	3	4	4	3	4	3	4	4	3	4	3	3	3	4	4	3	5	64
MA2/FA2	Long, No Champ	198	212	395	416	365	450	330	503	478	362	495	288	344	350	403	518	323	788	7218
		a	a	c	a	c	a	a	c	c	b	c	b	b	b	c	c	b	a	
C Pool (MA3, FA3, MA4, MJ15, MJ12)																				
Lakeside, Creekside																				
Divisions	Tees/Hole #	19	20	21	22	23	24	25	26	27	28	29	30	31	32	33	34	35	36	Front
Lakeside Silver AM	PAR	3	3	3	3	3	3	3	4	3	3	3	3	3	3	4	3	3	3	56
MA3	Long, No Champ	248	198	212	335	245	213	305	450	330	260	285	330	400	306	368	298	362	240	5385
FA3, MA4, MJ15, MJ12	Short	248	150	154	305	160	171	235	335	225	156	184	238	226	184	258	238	293	172	3932
	rec	a	a	a	b	a	a	b	a	a	a	a	a	a	a	a	a	b	a	
Divisions	Tees/Hole #	1	2	3	4	5	6	7	8	9	10	11	12	13	14	15	16	17	18	Front
Creekside Silver PM	PAR	3	3	3	3	3	4/3	3	3	3	4	3	4	3	4	3	3	3	3	58/57
MA3	Long, No Champ	188	205	288	244	308	318	275	240	398	525	324	426	310	478	160	225	170	330	5412
FA3, MA4, MJ15, MJ12	Short	148	147	260	142	205	146	200	150	309	400	270	323	245	478	160	225	170	190	4168
	rec	a	a	b	a	a	a	a	a	b	b	a	b	a	a	a	a	a	a	

Schedule

Schedule [Edit](#)

<http://dgscene.com/silveram>

Friday, July 26, 2024

10:00am Practice rounds, early player packs noon-5:30pm & flex start
- 5:30pm singles event (C-tier ran by JRay from DD)

Saturday, July 27, 2024

8:00am (A Pool - Advanced Divisions) Round One Ridge - Tee Times
- 11:10am start, Check-in at the clubhouse
Tee Times will be posted at
<https://www.pdga.com/tour/event/79208>

8:00am (B Pool - Intermediate Divisions) Round One Creekside - Tee
- 11:10am Times start, Park in Upper Parking Lot near Tee 14
Tee Times will be posted at
<https://www.pdga.com/tour/event/79208>

8:00am (C Pool - Rec, Novice, Juniors) Round One Lakeside - Tee
- 11:10am Times start, Park in Lower Parking Lot near Tee 19
Tee Times will be posted at
<https://www.pdga.com/tour/event/79208>

11:30am Lunch offered on-site at Silver Creek
- 2:30pm Italian Pasta

12:00pm (C Pool - Rec, Novice, Juniors) Round Two Creekside - Tee
- 3:10pm Times start - 4 Hours after 1st round, Park in Upper Parking
Lot near Tee 14

12:30pm (A Pool - Advanced Divisions) Round Two Lakeside - Tee
- 3:40pm Times start - 4.5 Hours after 1st round, Park in Lower
Parking Lot near Tee 19

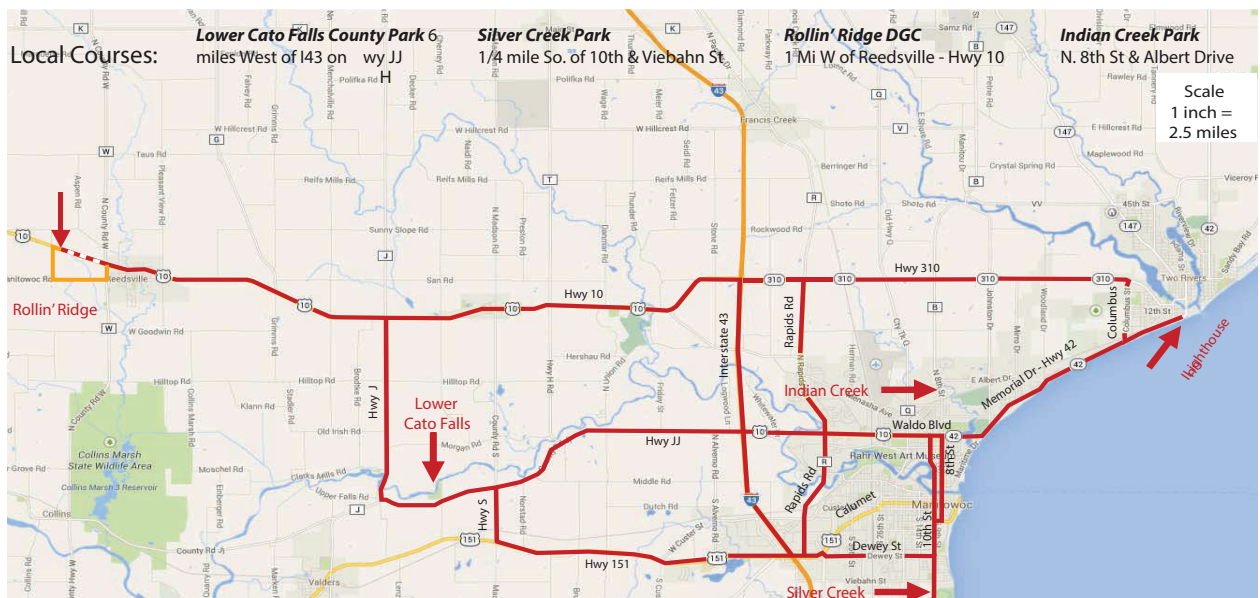
12:30pm (B Pool - Intermediate Divisions) Round Two Ridge - Tee
- 3:40pm Times start - 4.5 Hours after 1st round, Check-in at the
clubhouse

7:00pm No Awards ceremony for C Pool (Check on-line for results)

Sunday, July 28, 2024

8:00am (A/B Pool - Advanced, Intermediate ONLY) Round Three -
- 3:50pm Tee Times start, Super Silver 18 layout - Park in Lower
Parking Lot near Tee 20
Tee Times will be posted at
<https://www.pdga.com/tour/event/79208>

7:00pm No Awards ceremony for A/B Pool (Check on-line for results)



BREATHTAKING LAKE MICHIGAN VIEWS
HOTEL - RESTAURANT - BAR AND BANQUET
LHINN.COM 800-228-6416 TWO RIVERS, WI



LIGHTHOUSE INN

Directions

Courses

Silver Creek Park	3001 S. 10th St Manitowoc *1 block South of Viebahn St
Lower Cato Falls County Park	6 miles west of Interstate 43 on Hwy JJ Manitowoc
Rollin' Ridge DGC	10315 Hwy 10 *1 Mile West of Reedsville

Lodging

Lighthouse Inn *Host Hotel	920.793.4524 800.228.6416
AmericInn	920.684.3344
Best Western	920.682.7000
Holiday Inn	920.682.6000
Quality Inn	920.683.0220
Super 8	920.684.7841
Village Inn	920.794.8818

Area Info

Manitowoc Area Visitor & Convention Bureau	920.686.3070 Manitowoc.info
Camping and General Q's	920.629.9997

COOL GOOGLE MAP <http://goo.gl/maps/0lcBD>

Call Today
920.629.9997

Featured Disc Golf Course Supporters

Spots Available

University BP	John Van Lanen	The Fitness Store
Bank First National	Flying Fortress	Andrew Stephan



LIGHTHOUSE INN

ON LAKE MICHIGAN



A warm nautical decor enhances our spacious guest rooms plus wireless internet, refrigerators, coffee makers and cable TV with HBO & ESPN.

Rates Starting at ... \$109 plus tax



Large panoramic windows span our lakefront dining room and lounge providing a relaxing atmosphere. Full service breakfast, lunch and dinner. Cocktail lounge and meeting space.

Restaurant Hours:
Monday - Sunday 7:30am - 8:30pm
Frequent diner discounts offered.



CARRY-OUT MENU
www.menu.lhinn.com

www.lhinn.com
rooms@lhinn.com

Silver Creek Info

OUT OF BOUNDS / General

Anywhere in the creek or Lake Michigan, on concrete or blacktop

“completely surrounded and beyond” are OB - Tee pads are NOT OB

Casual water NOT OB in fairway unless marked (move straight back to a safe lie)

Gravel roads are NOT OB except as marked by paint on holes 2, 5, 24 & 34

Mandatories - Holes 3, 9, 12, 23, 32 and 34 (SS Holes 4, 9, 12, 16, 17)

Throwing past the mandatory line on wrong side, re-tee from short tee with one stroke penalty, except **on SS hole 9 re-tee from drop zone in front of large tree on left side of fairway marked with paint & flags, 270' from the pin.** If out of bounds occurs past mandatory line on the wrong side, mandatory penalty overrides OB penalty.

CHAMP TEES: 2, 3, 13, 20, 21, 34 (SS Holes 1, 2, 9, 12, 18)

OB paint on #2 - OB Road on #3 (blacktop)

OB Blacktop and manholes on #4 - OB Parking lot and road on #11

OB LEFT OF FAIRWAY with paint on #s 10&11

(Armory Pkg Lot on 11 is OB) - OB Road on #12

OB Blacktop parking lots on #13 and 14

OB paint along top of creek bed on #14 green

OB paint along gravel on #2, 5, 24 & 34 (24 & 34 are OB River - safe if across)

OB Road on #35-36

MA1, MA40 play champ tees.

FA1, MA50-60, MA2 & FA2, MA3 play long tees - no champ tees.

FA3, MA4 MJ15 MJ12 play short tees.

Rollin' Ridge Info

OUT OF BOUNDS

All water on hole 1, 2 and 18 (hole 2 drop zone = orange short pad)

Except stream on hole 1 played as casual water between & under the bridges

Right side of 3 at the 1st lawn mower cut marked with flags

NO OB on hole 4

MANDATORIES - Holes 7, 8 & 9, 17 – white sign (retee from orange tee on 7 & 17, retee from red tee on 8 & 9 - one stroke penalty)

OTHER

All divisions play to the same red basket locations

Foul Line - must be completely behind at time of release (see rule 8.02.01B)

All Tee Pads – front line is “before” the 4 foot run off (not on top of the line)

Check-in at the score keepers table before and after your round Tournament disc sales and raffle will benefit the payout

Greens fees are optional – donations accepted in the outside slot by pro shop

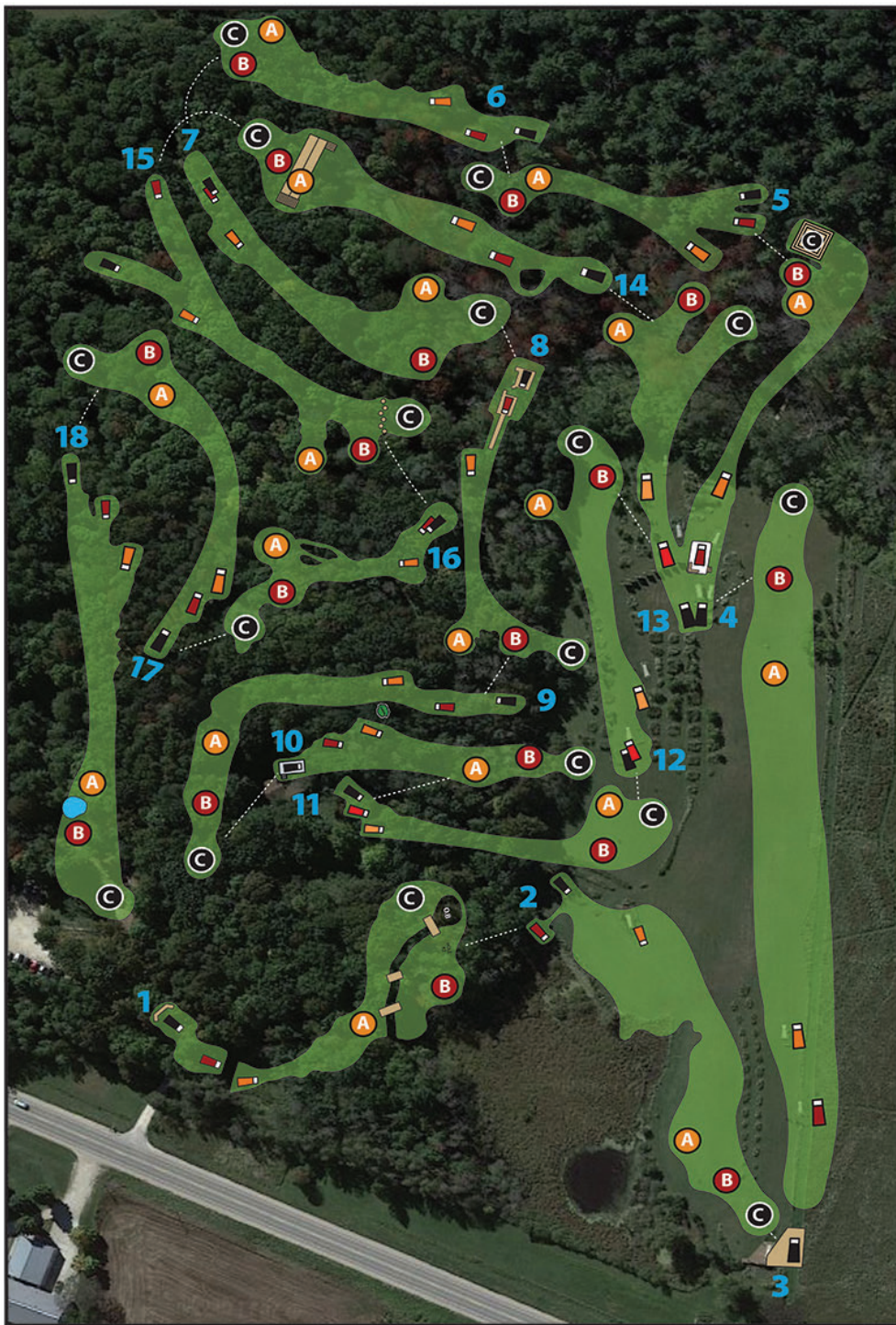
Mosquito spray located near hole 1 on the deck

ADVANCED play RED tees, INTERMEDIATE play ORANGE tees.



Rollin Ridge

DISC GOLF COURSE

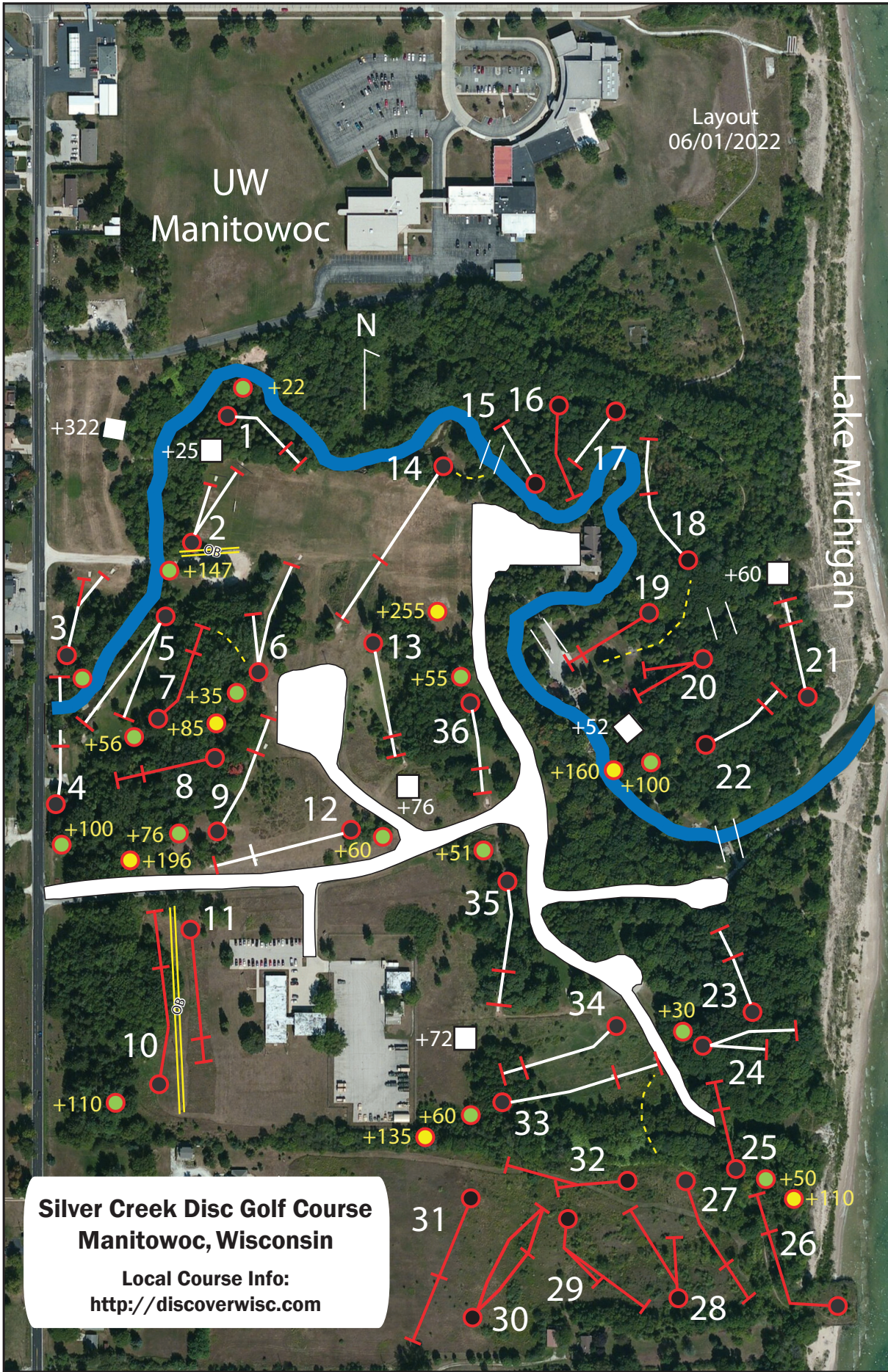


BLACK - LONG TEES									
	PIN A			PIN B			PIN C		
1	3	373	4	445	4	512			
2	3	393	4	471	4	558			
3	4	756	4	895	5	1005			
4	3	400	4	448	4	510			
5	3	308	3	358	4	420			
6	3	365	3	362	3	400			
7	3	358	4	413	4	457			
8	3	390	3	399	4	468			
9	4	452	4	533	5	583			
10	3	290	3	334	3	397			
11	3	313	3	327	3	375			
12	3	361	3	415	3	449			
13	3	399	4	434	4	417			
14	3	373	3	396	4	430			
15	3	401	4	447	4	476			
16	3	217	3	231	3	276			
17	3	345	4	432	4	497			
18	4	504	5	616	5	731			
		57 6998		63 7956		70 8961			

RED - MIDDLE TEES									
	PIN A			PIN B			PIN C		
1	3	310	3	378	4	443			
2	3	298	3	401	3	485			
3	4	577	4	718	5	823			
4	3	333	3	380	3	440			
5	3	283	3	333	4	395			
6	3	294	3	291	3	329			
7	3	358	4	413	4	457			
8	3	331	3	340	4	401			
9	4	337	4	418	5	468			
10	3	229	3	273	3	336			
11	3	295	3	309	3	357			
12	3	361	3	415	3	449			
13	3	306	3	341	3	324			
14	3	297	3	320	3	354			
15	3	382	4	427	4	455			
16	3	217	3	231	3	276			
17	3	264	3	354	4	420			
18	3	394	4	506	5	621			
		56 5866		59 6848		66 7833			

ORANGE - SHORT TEES									
	PIN A			PIN B			PIN C		
1	3	257	3	326	3	397			
2	3	251	3	338	3	416			
3	3	479	4	619	5	726			
4	3	200	3	273	3	333			
5	3	208	3	258	3	320			
6	3	239	3	236	3	274			
7	3	298	3	353	3	397			
8	3	205	3	214	3	277			
9	4	290	3	371	4	421			
10	3	205	3	249	3	312			
11	3	251	3	265	3	313			
12	3	287	3	341	3	375			
13	3	228	3	263	3	246			
14	3	232	3	255	3	289			
15	3	236	3	282	3	311			
16	3	155	3	169	3	214			
17	3	243	3	334	3	400			
18	3	304	3	414	4	531			
		54 4568		55 5560		58 6552			

CLASSIC COURSE	HOLE PAR	1	2	3	4	5	6	7	8	9	10	11	12	13	14	15	16	17	18	Total
ORANGE TEE																		243		
RED TEE		378		718	440	333			401	468	273	309		306	320	455			621	7239
BLACK TEE			471				400	457					415				231			



Layout
06/01/2022

UW
Manitowoc

Lake Michigan

Hole	Par	Short Tees		
		A	B	C
1	3	148	170	
2	3	147		
3	3	200		
4	3	142	242	
5	3/4	205	352	
6	4	146	181	231
7	3	200	256	
8	3	150		
9	3/4	233	309	429
10	4	290	400	
11	3	270		
12	3	248	323	
13	3	245		
14	4	288		
15	3	160		
16	3	225		
17	3	170		
18	3	190		

Front	59	3657	4278	4448
19	3	192		
20	3	150		
21	3	154		
22	4	205	305	365
23	3	160		
24	3	171	206	
25	3	185	235	295
26	4	335		
27	3	225		
28	3	156		
29	3	184		
30	3	238		
31	3	226		
32	3	184		
33	4	258	318	393
34	3	238	392	
35	3	242	293	
36	4	172	227	427

Back	58	3675	4026	4421
Total	117	7332	8304	8869

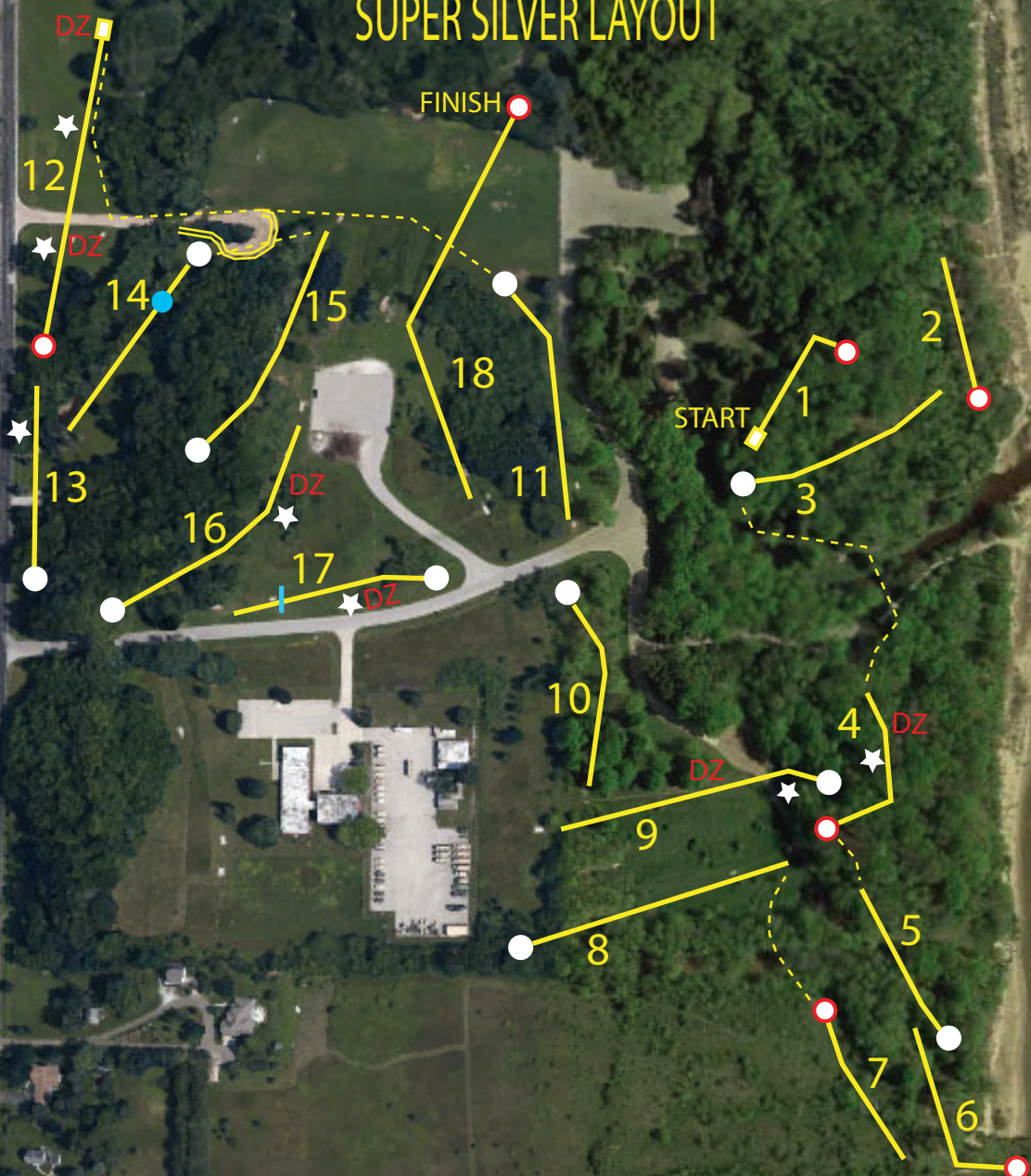
Hole	Par	Long Tees			Champ
		A	B	C	
1	3	188	210		
2	3	205			230
3	3/4	228	288		610
4	3	244	344		
5	3	308	350	455	
6	4	318	353	403	
7	3	275	331		
8	3	240			
9	3/4	322	398	518	
10	4	415	525		
11	3	324			
12	3	351	426		
13	3	310			386
14	4	478			
15	3	160			
16	3	225			
17	3	170			
18	3	330			

Front	59	5091	5667	5882	6365
19	3	248			
20	3	198			250
21	3	212			272
22	4	235	335	395	
23	3	245			
24	3	213	248		
25	3	255	305	365	
26	4	450			
27	3	330			
28	3	260			
29	3	285			
30	3	330			
31	3	400			
32	3	306			
33	4	368	428	503	
34	3	298	452		550
35	3	311	362		
36	4	240	295	495	
Back	58	5184	5689	6084	6294
Total	117	10275	11356	11966	12693

Silver Creek Disc Golf Course
Manitowoc, Wisconsin
 Local Course Info:
<http://discoverwisc.com>

ALL MA1, MA40 play champ tees
CHAMP TEES #1, 2, 9, 12 and 18
ALL DIVS play SS 14 B-pin
& SS 17 Short Tee (USWDGC LAYOUT)
FA1, MA50-60, MA2 & FA2 play long
tees - no champ tees

SILVER CREEK PARK 2024 SUPER SILVER LAYOUT



 **confluence** GRAPHICS 
- DESIGN & PRINT STUDIO -

- **Digital and offset multicolor printing**
- **Electronic Prepress/imaging**
- **Graphic Design**
- **High-volume Black and White Copying**
- **Business Identity Packages | Brochures**
- **Booklets | Forms | Post Cards**
- **Architectural Plans | Large Format**
- **Full Service Mailing | Bindery & Finishing**
- **Online Ordering**
- **Curbside Delivery | Shipping Available**

CONFLUENCE GRAPHICS 265 East Hampton Avenue
Milwaukee, Wisconsin 53217
orders@confluencegraphics.net
414-962-7000



3535 Calumet Ave. Mtwc
Phone: (920) 686.0414



1515 Memorial Dr. Two Rivers
Phone: (920) 793.4524