



Official 2024 Player Program Caddy Book

Call or Text Questions:
(920) 973-3429 – General Info
(920) 629-9997 – Officials/TD

More Info:

www.silvercupdiscgolf.com

Spectator Info: www.discgolfmanitowoc.com

Email: discgolf@discoverwisc.com



Sponsor List (call to thank them...)

Bank 1st National	920-652-3274	bankfirstnational.com
Beerntsen's Confectionary	920-684-9616	Beerntsens.com
Cedar Crest Ice Cream	800-682-5577	cedarcresticecream.com
Confluence Graphics	414-962-7000	confluencegraphics.net
Cool City Spas	920-794-8321	royalkitchensandbaths.com
DEW Disc Golf	920-629-9997	discoverwisc.com
Discraft	248-624-2250	discraft.com
Evergreen Disc Sports		
EZ-GO Golf Cars	920-629-1349	
Flying Fortress	920-540-3107	
Hartman's Greenhouse	920-683-2123	hartmansgreenhouse.com
John Van Lanen		
La Carreta Mexican	920-686-0414	lacarretamanitowoc.com
Lakeshore Auto Glass	920-458-4631	lakeshoreautoglass.com
Lighthouse Inn	920-793-4524	lhinn.com
Mtwc Area Vis & Conv Bureau	920-686-6071	manitowoc.info
Manitowoc Parks & Rec	920-686-3580	manitowoc.org
Manitowoc Trophy	920-684-7318	manitowoctrophy.com
MVP Disc Sports		mvpdiscsports.com
Paige Pierce		paigepierce.com
Rollin' Ridge DGC	920-740-7308	rollinridge.com
Scott's Vending	920-451-9820	scottsvending.net
Andrew Stephan		The Musicman
The Fitness Store	920-684-8088	thefitnessstore.com
Throwing Art (John Dorn)	920-419-0582	throwingart.com
University BP	920-973-5661	poppenterprises.com
Visual Eclipse Productions	414-559-4687	visualeclipseproductions.com

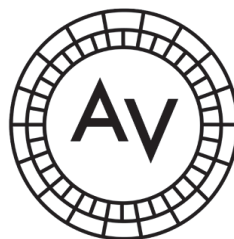
JUNGLE CHRYSLER - Registration Refund ACE RUN

Like eminem says, "You only get one shot" so Ace hole 27 on Friday. 1st ace wins a refund of your registration. No aces and the Advanced winner moves up next year FREE.

TEE OFF AREAS (check-in 20 minutes prior to your tee time)

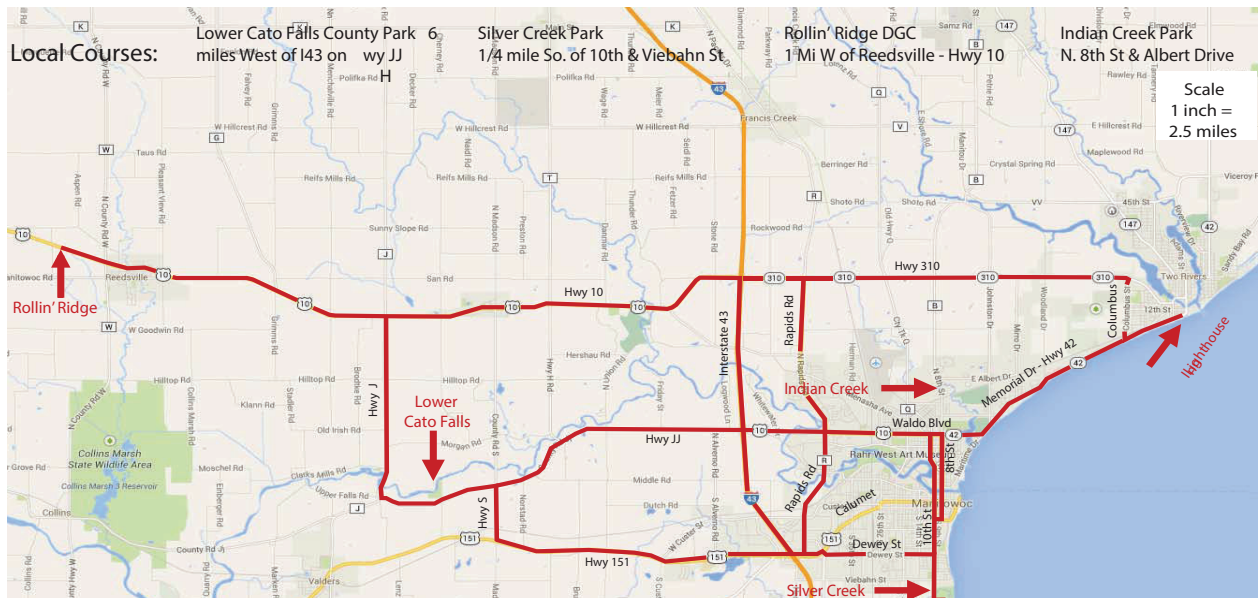
Super Silver	Hole 20 (Super 1)	Check-in at Concession
--------------	-------------------	------------------------

Silver Cup Sponsors



Schedule

7/11	2:30p 5:00p	Silver Creek	Play with the Pros FREE Family Clinic
7/12	8:00a 3:00p	Silver Creek	Round 1 Burgers/Brats Available Tee Times see pdga.com
7/13	8:00a 3:00p	Silver Creek	Round 2 Italian Pasta Available Tee Times see pdga.com
7/14	8:00a 3:00p	Silver Creek	Round 3 lunch on your own Tee Times see pdga.com
>All wkend		Silver Creek	EDGE Foundation Games & Raffle
	6:00p	Silver Creek	Awards after last putt



BREATHTAKING LAKE MICHIGAN VIEWS
HOTEL - RESTAURANT - BAR AND BANQUET
LHINN.COM 800-228-6416 TWO RIVERS, WI



LIGHTHOUSE INN

Directions

Courses

Silver Creek Park	3001 S. 10th St Manitowoc *1 block South of Viebahn St
Lower Cato Falls County Park	6 miles west of Interstate 43 on Hwy JJ Manitowoc
Rollin' Ridge DGC	10315 Hwy 10 *1 Mile West of Reedsville

Lodging

Lighthouse Inn *Host Hotel	920.793.4524 800.228.6416
AmericInn	920.684.3344
Best Western	920.682.7000
Holiday Inn	920.682.6000
Quality Inn	920.683.0220
Super 8	920.684.7841
Village Inn	920.794.8818

Area Info

Manitowoc Area Visitor & Convention Bureau	800.627.4896 Manitowoc.info
Camping and General Q's	920.629.9997

COOL GOOGLE MAP <http://goo.gl/maps/0lcBD>

Call Today
920.629.9997

Featured Disc Golf Course Supporters

Spots Available

University BP	John Van Lanen	The Fitness Store
Bank First National	Flying Fortress	Andrew Stephan

Pro Divisions	Tees/Hole #	1	2	3	4	5	6	7	8	9	10	11	12	13	14	15	16	17	18	
	Original Hole #	20	21	22	23-24	25	26	27	33	34	35	36	3	4	5	6	9	12	13-14	
Super Silver	PAR	3	3	4	4	3	4	3	4	4	3	4	4	3	3	4	4	3	5	65
MPO/MP40-50-55	Long/Champ	250	272	395	453	365	450	330	503	550	362	495	610	344	455	403	518	426	864	8045
FPO/FP40/MP60/MP65	Long+/ Champ	250	272	395	453	365	450	330	503	550	362	495	610	344	350	403	518	323	864	7837
	Silver Pins	a	a	c	b	c	a	a	c	c	b	c	b	b	b/c	c	c	b	a	
FPO/FP40/MP60/MP65 play middle pin in SS 14 and short tee on SS 17 (USWDGC layout)																				

Silver Creek Info

OUT OF BOUNDS / General

Anywhere in the creek or Lake Michigan on concrete or blacktop
 "Completely surrounded and beyond" are OB Tee pads are NOT OB
 Casual water NOT OB in fairway unless marked (move straight back to a safe lie)
 Gravel roads are NOT OB except as marked by paint on hole 9 & 14
 OB paint along gravel on #9
 OB Road on #10-11
 OB Road on #12 (park access road not OB)
 OB Blacktop and manholes on #13
 OB paint along gravel on #14
 OB Road on #16-17
 OB Blacktop parking lots on #18
 OB paint along top of creek bed on #18 green

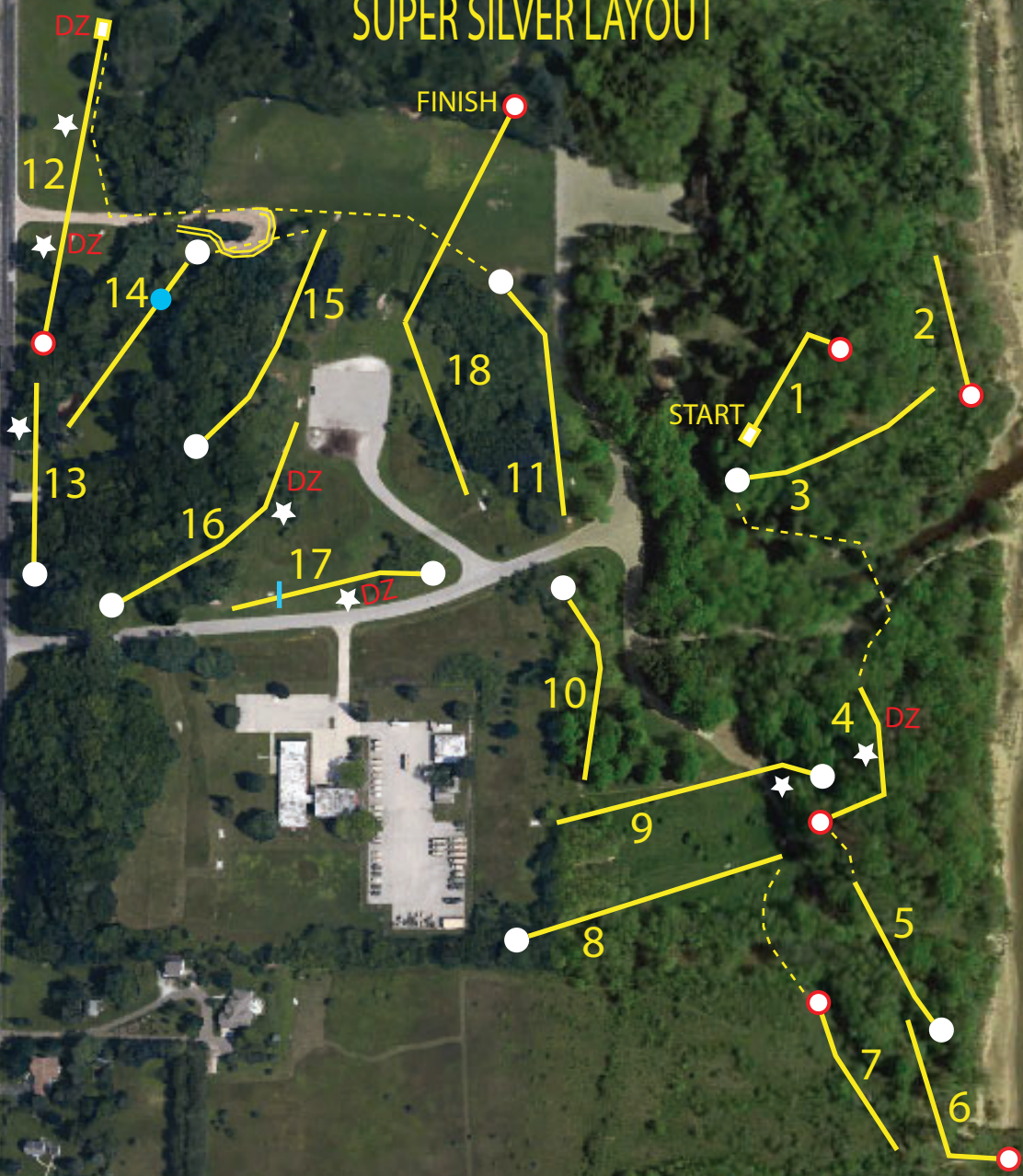
Mandatories - Holes - 4, 9, 12, 16, 17

Throwing past the mandatory line on wrong side, re-tee from short tee with one stroke penalty, except **on SS hole 9 re-tee from drop zone in front of large tree on left side of fairway marked with paint & flags, 270' from the pin.** If out of bounds occurs past mandatory line on the wrong side, mandatory penalty overrides OB penalty.

ALL DIVISIONS play champ tees. CHAMP TEES on holes 1, 2, 9, 12, 18

ALL PROS play champ tees
CHAMP TEES #1, 2, 9, 12 and 18
FPO, FP40, MP60, MP65
Play SS 14 B Pin and
SS 17 Short Tee (USWDGC Layout)

SILVER CREEK PARK 2024 SUPER SILVER LAYOUT





LIGHTHOUSE INN

ON LAKE MICHIGAN



A warm nautical decor enhances our spacious guest rooms plus wireless internet, refrigerators, coffee makers and cable TV with HBO & ESPN.

Rates Starting at ... \$109 plus tax



Large panoramic windows span our lakefront dining room and lounge providing a relaxing atmosphere. Full service breakfast, lunch and dinner. Cocktail lounge and meeting space.

Restaurant Hours:
Monday - Sunday 7:30am - 8:30pm
Frequent diner discounts offered.



CARRY-OUT MENU
www.menu.lhinn.com

www.lhinn.com
rooms@lhinn.com

 **confluence** GRAPHICS 
- DESIGN & PRINT STUDIO -

- **Digital and offset multicolor printing**
- **Electronic Prepress/imaging**
- **Graphic Design**
- **High-volume Black and White Copying**
- **Business Identity Packages | Brochures**
- **Booklets | Forms | Post Cards**
- **Architectural Plans | Large Format**
- **Full Service Mailing | Bindery & Finishing**
- **Online Ordering**
- **Curbside Delivery | Shipping Available**

CONFLUENCE GRAPHICS 265 East Hampton Avenue
Milwaukee, Wisconsin 53217
orders@confluencegraphics.net
414-962-7000



3535 Calumet Ave. Mtwc
Phone: (920) 686.0414



1515 Memorial Dr. Two Rivers
Phone: (920) 793.4524



FULL LINE VENDING

Two Rivers, WI

920-793-4171

SILVER CUP XXIV Hospitality Sponsor



FOR MORE INFORMATION CONTACT:
 Discover Eastern Wisconsin Disc Golf
<http://silvercupdiscgolf.com>
 920.629.9997 Jim Van Lanen

SILVER CREEK PARK
 MANITOWOC
 WISCONSIN



SILVER CREEK

1/4 mile South of 10th & Viebahn Streets Mtwc



COAST FOR A WHILE.
 MANITOWOC



TWO RIVERS



BankFirst

NATIONAL

For Better Banking, Think First



FULL LINE VENDING
 Two Rivers, WI
 920-793-4171



FREE Disc Golf Clinic

Thursday July 11, 2024 5 to 7pm

Players of all ages welcome!



Stations teaching forehand, backhand, putting and approach techniques.

NO REGISTRATION REQUIRED.

BRING A FRIEND!

- **Demonstrations and instruction** from PDGA Tourning Professionals

- **FREE Take Home Disc** while supply lasts

Games and Prizes for participants

- **FREE refreshments**
 • Brats, Hot Dogs, chips & Beverages

(Play with the Pros event at 2:30pm)

PRESENTED BY

Discover Eastern Wisconsin



Take an hour off to learn and you will take home a lifetime of fun, challenge and exercise. This event is sponsored by Discover Eastern Wisconsin Disc Golf, Wisconsin Disc Sports Association, Bank First National, Manitowoc Area Visitor & Convention Bureau, Discraft, and Scott's Vending. Thank you to our local disc golf volunteers and professional disc golf presenters.